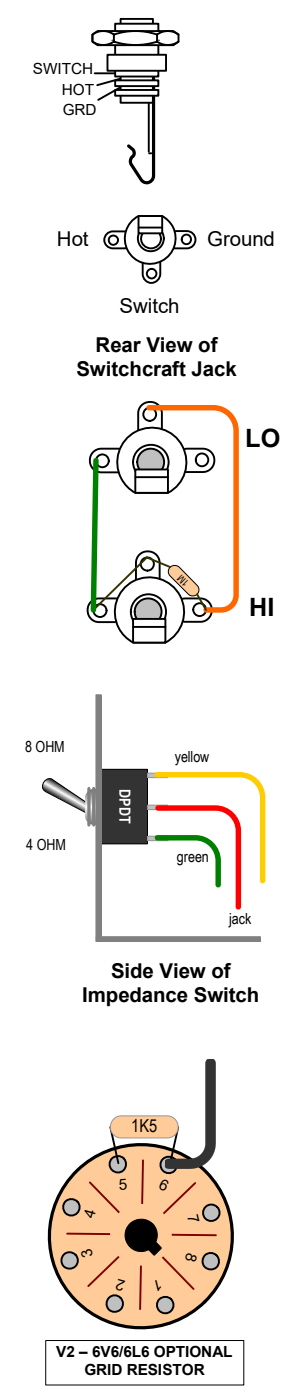
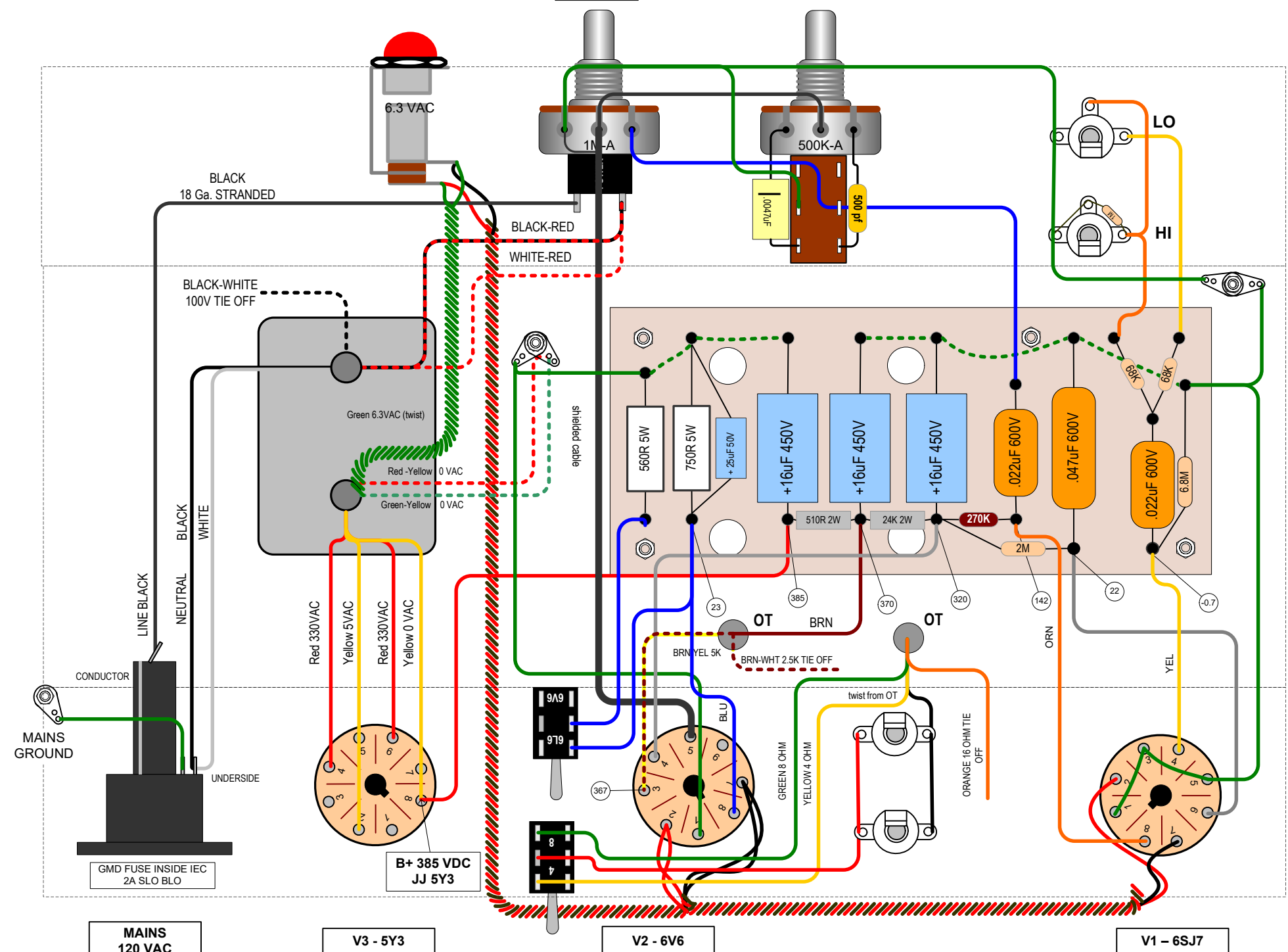


4 3 2 1

INDICATOR VOLUME / POWER TONE INSTRUMENTS

INPUT WIRING



D  
C  
B  
A

D  
C  
B  
A

- HARDWARE**
- 4-40 X 5/16" screw - sockets, pre ground, IEC
  - 6-32 X 3/8" screw - power ground
  - 6-32 X 3/4" + stand-off - mount board
  - 8-32 x 3/8" screw - Mount OT, mains ground
  - 8-32 locknuts (4) - mount PT
  - 10-32 X 1-1/4" - attach chassis to cabinet

REV.	DESCRIPTION	DATE	BY
1	First Release	6/01/16	SC
2	Changed conn to V1 pin 8 and OT	6/01/16	SC
3	corrected trans VAC, 24K R	12-06-17	SC
4	updated DC voltages	15-08-17	SC
5	updated 6V6 / 6L6 connections	15/08/17	SC
6	reversed OT connections to switch	27/08/18	SC
7	updated OT connections for 2.5K & 16 ohms	5/12/18	SC
8	updated PT connections for new HTS XFRMR	16/12/19	SC
9	updated IEC connections	3/10/20	SC

**Trinity Amps**

**TRITON**

SIZE	FSCM NO	DWG NO	REV 9.1
SCALE	1 : 1	SHEET	2 OF 21

4 3 2 1