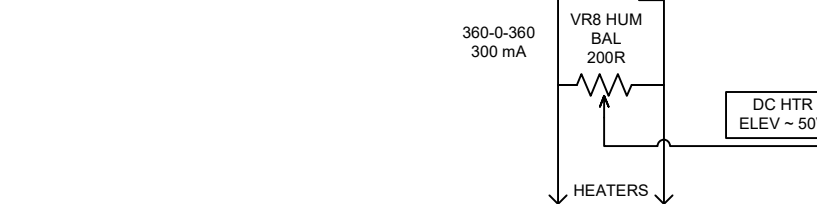
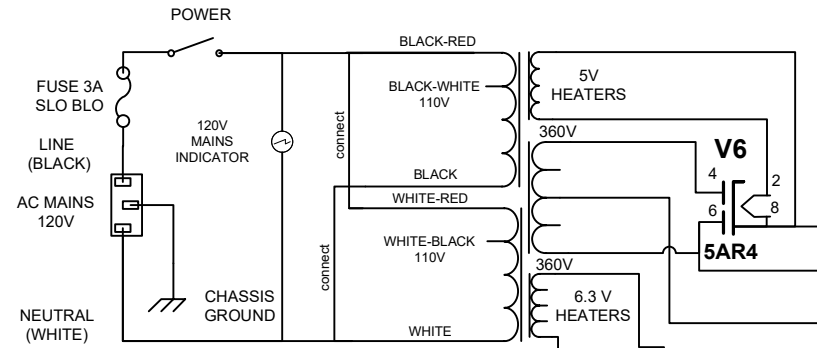


220V - 240V AC 50 Hz TRANSFORMER HOOKUP



VOLTAGES INDICATED 446 MEASURED IN DC FIXED BIAS SETTING

# Trinity Amps

## TRIP TOP - BASS AMP

\* Optional 560K PI grid stopper and 50pf plate cap on V3  
 \*\* Heritage Model

- ✦ C19, 22, 23, 24 increased to 100V; reversed impedance switch taps; C24 now 22uF
- ✦ Bias design changed; added dual test points; R24 changed to 220R
- ✦ C23 grounded
- ✦ C17, 18 changed to .047uF
- ✦ Bright cap changed to 500 pf; colours changed on PT primary
- ✦ Reversed V1/V2 labelling
- ✦ C3 changed to 500pf
- ✦ Standby switch added
- ✦ Standby switch located after 1st filter cap, C20; 50V bias tap removed & replaced with 68K drop resistor
- ✦ R43 changed to 47K from 22K
- ✦ Updated fixed bias conn. to rectifier; R43 .22K
- ✦ C22 changed from 100uF to 47uF
- ✦ Added optional (\*) R/C on V3
- ✦ 18-C19, 22, 23, 24 changed to 47uF/63V
- ✦ 19-Added Heritage values; updated voltages; reversed connections to bias pot
- ✦ 20 - updated for new power transformer

SIZE	FSCM NO	DWG NO	REV
SCALE	1 : 1	SHEET	1 OF 24